



Potomac Valley Chapter

American Rhododendron Society

www.arspvc.org

Summer Newsletter: August 2022

Chapter Officers

President: Carol Segree
csegree17@outlook.com
Secretary: Diane Reinke
Isabelle49@aol.com
Treasurer: Phyllis Rittman
rittwoman@gmail.com

Potomac Valley Chapter Calendar – 2022

- September 27 - 29: ARS Fall Meeting, Gettysburg, PA
- October 2: PVC Picnic, Seneca Creek State Park, Gaithersburg, MD
- November 5: PVC Fall Banquet,
- January 2023 (date TBA): Ralf Bauer Zoom Lecture on R. minus
- April 19 - 23, 2023: Joint ARS/ASA Convention, Atlanta, GA

ARS Fall Meeting, Gettysburg, PA

Date: September 27 – 29 (Tuesday to Thursday)

Location: Wyndham Hotel – Gettysburg

95 Presidential Circle

Gettysburg, PA 17325

717-339-0020

The Mason-Dixon Chapter has put together an exciting fall conference and we encourage the members of District 9 to attend. The Middle Atlantic Chapter has cancelled their regular fall plans and will substitute this event for that meeting. Our Potomac Valley Chapter will keep our schedule and add this activity. We are planning a District Meeting in Annapolis in 2024 and hope the local chapters will support us.

The early registration deadline for the ARS Fall Meeting is August 31. Please check your schedules and join us if you can. Room reservations must be made directly with the Wyndham Hotel listed above. They have given us a special conference rate of \$136 per night. Be sure to mention the ARS to get the discount.

Registration for the Meeting:

1. To pay by check, click on this link to get a copy of the Registration Form. Fill it out and then mail with a check to the meeting registrar.

[Registration Form](#)

2. To pay by credit card or Paypal, click on this link to Online Registration. The Azalea Society of America will be managing credit card payments.

[Online Registration](#)

Conference Schedule:

Tuesday: Earlier in the day, John Bartlett's Gettysburg Gardens will have an Open House where you can purchase some rare woody plants and other treasures. That evening will have a welcome at the banquet, an after-dinner talk by Don Hyatt about some of the new plants being developed in the Eastern US, and then the opening of the convention plant sale.

Wednesday: After breakfast, we will leave for a tour of Hershey Park to see its lovely rose garden and other attractions as well as a visit to Historic Gettysburg Battlefield. The evening will feature a banquet and a Keynote address by Wayne Mezitt of Weston Nurseries. The plant sale will be open afterwards.

Thursday: This half-day program will include a discussion with ARS President Bill Meyers, a presentation by Karel Bernady on the new Hybridizers Test Garden at the Tyler Arboretum, and a share session at the Breeders' Roundtable. This will also be the last chance to visit the plant sale.

For more information including a detailed schedule and the same registration links above, check out the conference website: <http://arsstore.org/Fall2022/>



Potomac Valley Chapter Picnic

Where: Seneca Creek State Park

11950 Clopper Rd

Gaithersburg, MD 20878

Date: Sunday, October 2, 2022, 1:00 – 5:00 PM

We will be holding our annual picnic in the Fawn Pavilion (right) at Seneca Creek State Park as we have done for many years. The date is Sunday, October 2, from 1 to 5 PM. Mark your calendars. The park does charge a nominal entry fee per person that they will collect at the gate. Please join us!



Rather than dealing with grilling hamburgers and hot dogs, the chapter will be providing fried chicken as we did last year. We will need a head count in advance and will send a reminder in September. It will include more details as well as directions. Attendees are asked to bring a side suitable for a picnic such as a salad, some veggies, a casserole, fruit, chips, or a dessert. We will ask for someone to bring ice and drinks. Alcoholic beverages are not allowed. We may have plants for sale or a plant exchange, too.

Fall Banquet – November 5

Normandie Farm, the restaurant we have used for most of our fall banquets since 2010, closed down this summer so we have been looking for an alternative. The nearby Potomac United Methodist Church has a meeting room where we can offer a catered meal and have a speaker. We have booked that for our fall banquet this year. More details about that later. Link to the church: <https://www.potomacumc.org/>

ARS Photo Contest Deadline Extended to September 1

This is just a reminder that the deadline for entering the ARS Photo Contest has been extended from July 31 to September 1, 2022. There are 6 categories: 1) Flower, truss or spray; 2) Plant in bloom; 3) Landscape or plants in the wild or in gardens; 4) Foliage; 5) People, Insects, or Animals; and 6) Other, for creative or artistic effects. All images must feature rhododendrons or azaleas and should be scaled to a modest size and sent to the ARS Journal Editor, Glen Jamieson at ars.editor@gmail.com. The number of entries by any individual per category is restricted to two. Full contest guidelines can be found in the Winter 2022 Journal or in the July 2022 Rhodo-Notes that Dave Banks just mailed to members on July 26.



Do You Need Plants?

Here are some local plant sales that may be of interest:

1. **Green Spring Gardens** will hold its Fall Festival and Plant Sale on Saturday, September 17, from 9:00 AM to 3:00 PM. Address: 4603 Green Spring Road, Alexandria, VA, 22312.
2. **The Northern Virginia Chapter ASA** will hold its Fall Azalea Sale on Saturday, September 24, from 1:00 PM to 4:00 PM at the Kirkwood Presbyterian Church, 8336 Carrleigh Pkwy, West Springfield, VA 22152. Expect a wide selection of rare and unusual plants.
3. **The ARS Fall Regional in Gettysburg** will have an exceptional plant sale for attendees during their meeting from Tuesday through Thursday morning, September 27 – 29. Many are choice rhododendrons propagated by Karel Bernady and grown at Kristoph's Nursery in New Jersey.

Sad News: Jean Beaudry

August 28, 1942 – June 17, 2022

It is with great sadness that we report the loss of Jean Beaudry. For quite some time, doctors were treating her for multiple myeloma, a rare cancer of the white blood cells. She seemed to be doing well recently but then died peacefully in her sleep on June 17. Her passing came as a surprise and has left us with an incredible void. We will miss her!

Norm and Jean were married on April 1, 1963, and raised two children who are now married, Jeffrey and Lara (Byer). They have four grandchildren. For more details about family history and education, refer to Jean's obituary at the Pumphrey Funeral Home.

<https://www.pumphreyfuneralhome.com/obituaries/Jean-Beaudry?obId=25206278>

Jean and Norm developed a magnificent garden at their Bethesda home which was featured on many garden tours. They were avid supporters of the ARS and our chapter. Jean was so warm and cheerful, always making sure new members felt welcome. They were founding members of the "Sandwich Club," an ARS committee formed to evaluate derivatives of the Dexter rhododendrons on Cape Cod including the Cowles hybrids at Heritage Plantation and the Consolini hybrids at the home of Harold and Eveline Pilkington. Jean also served as the ARS Secretary and helped Norm who chaired the ARS Seed Exchange for many years.

There will be a celebration of Jean's life at a date yet to be determined. Family suggest that expressions of sympathy can be made to the University of Maryland Marlene and Stewart Greenebaum Comprehensive Cancer Center in Baltimore that treated Jean. (410-328-7609) <https://www.umms.org/umgcc/giving>

The ARS has options for memorial donations through the Endowment Fund and the Research Foundation. Those links are on the ARS website: <https://www.rhododendron.org/donations.htm>

Our Potomac Valley Chapter will be raising funds for a memorial bench and plantings at London Town Gardens in honor of Jean, much as we did for Gray Carter. Her memorial will feature the Dexters.

Remembering a Friend - Jean Beaudry

by Carol Segree

There are many riches in life that are not measured in dollar signs. Mine are usually garden related: after waiting for years, seeing a beautiful flower blooming for the first time; sharing one's passions with like-minded others; experiencing nature's miracles; being gifted a plant from a friend's garden; finding inspiration from the creative talents of others.

Perhaps the greatest of all is a friend who brings those riches to the friendship. For me, as I am sure many others, Jean Beaudry brought that richness to my life. I first met Jean in the early '90s when I joined the ARS. I knew little about rhododendrons and I was surrounded by experts. Fortunately for me, she took me under

her wings. Many times, she had a book for me to borrow that enhanced my knowledge of these plants that I came to love and learned to grow. For decades I watched as she sought out new PVC members to make sure they were welcomed and nurtured them with information about rhododendrons.



Jean and Orange Rhododendron

Photo: Don Hyatt



Jean Beaudry

Photo: Don Hyatt



Jean Beaudry

Photo: Betty Ann Addison

The first time I saw Jean and Norman's garden, I was blown away at its beauty. I loved the garden art that she so creatively added to their garden. That inspired me to love garden art, as well. They gave me many rhododendrons that she said would do well in my garden. Some of those plants are the backbones of my garden today. The following images were taken in the Beaudry Garden.



The Beaudry Garden - Top Row: 1. Azalea 'Orchid Belle' and Weeping Alaskan Cedar; 2. Rhododendrons 'Nestucca', and 'Katherine Dalton' with Japanese Maple; 3. Rhododendron 'Hardy Giant', azalea 'Wildfire', and Dogwoods
Middle Row: 4. Cat Sculpture amid 'Hershey Red' azaleas with Japanese Maple and hostas; 5. Pagoda Sculpture and 'Hardy Giant'; 6. Path to Lower Patio with Satsuki Azalea and bicolor sport of 'Kingetsu', evergreens, hostas, and ferns
Bottom Row: 7. Jean Beaudry shows a new member a Chisolm-Merritt azalea hybrid; 8. Rhododendrons 'Strawberry Parfait', 'Bellringer' and 'Ingrid Mehlquist' with *R. fortunei* in the distance; 9. 'Helen Viera'; 10. Frog Sculpture

Photos: Don Hyatt

Over the years, there were flowers shows, visits to PVC and other chapter events, conventions, garden visits, nursery trips, and so much more that led to a special friendship. There were many trips to Cape Cod to view the Dexter rhododendrons and Pilkington hybrids, meet new rhododendron people, and not to be forgotten, enjoying lobster rolls. It was through Jean that I was privileged to meet Bob and Audrey Furman and to see his fabulous yellow rhododendron, ‘BFBY.’ Below are some images from trips to Cape Cod.



Jean admires hybrids on the Cape



Jean and Eveline Pilkington



Jean and Norm record data

Photos: Don Hyatt



Jean and Norm make a cross on ‘BFBY’



‘BFBY’ = “Bob Furman’s Big Yellow”



Jean, Bob Furman, ‘BFBY’

Photos: Don Hyatt



Cave Vent on Ice Mountain

Photo: Carol Segree

One special outing that Jean and I took was touring Ice Mountain, which is a West Virginia preserve that gets its name from the refrigeration effect of its talus, a sloping mass of boulders at the foot of the mountain. It has a collection of boreal plants usually found much further north. Although we were too late in year to see the ice that it produced, we felt the frigid air from vents in the mountain. What a fun day we had! This links to article:

<http://www.arspvc.org/articles/newsletter.2011-09-web.pdf>

In addition to being an avid gardener, Jean was an accomplished weaver who was active in the Maryland Sheep and Wool, and other fiber groups. I treasure an exquisite scarf that she dyed and made for me many years ago. Nothing is more valuable than a gift made by a friend! I will always remember Jean’s impressive artistic talents.



Shearing the Sheep



Dyed Wool

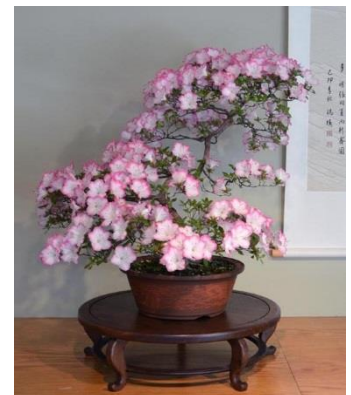
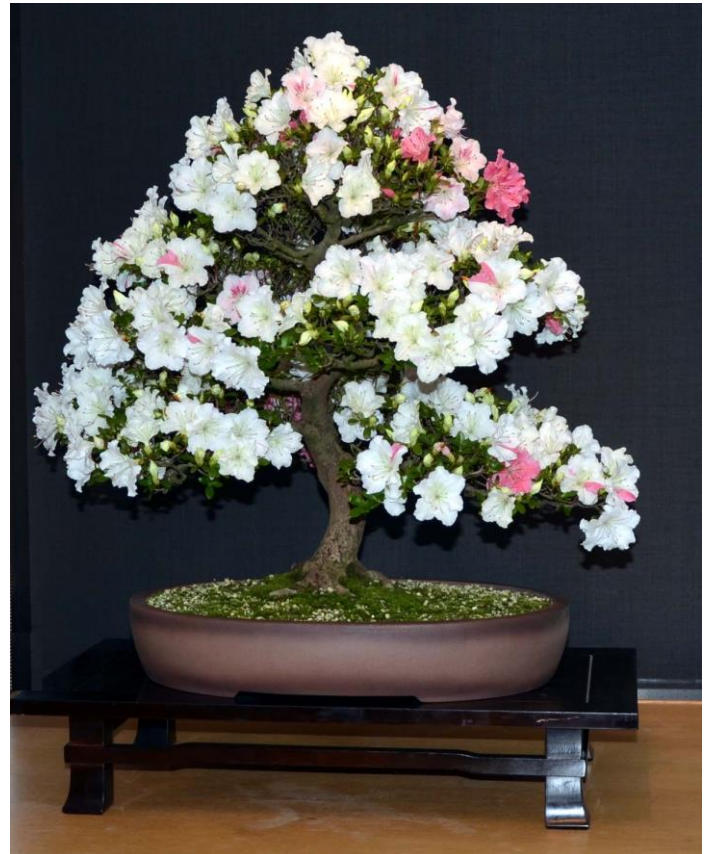
Photos: Don Hyatt

The National Bonsai and Penjing Museum at the U.S. National Arboretum

Looking for an outing? Consider the awesome Bonsai exhibit at the U.S. National Arboretum. It is probably the finest collection in North America. The museum was started in 1976 by a gift of 53 trees from Japan to commemorate our nation's Bicentennial. In early June when the Satsuki azaleas bloom, they are magnificent but there is much more to the collection. The artistically groomed dwarf trees are spectacular at any time of the year. Some are hundreds of years old and have been nurtured for many generations.

YouTube Tour of the Bonsai Collection:

<https://www.youtube.com/watch?v=wTVilKve9KA>



Photos: Don Hyatt

Summer Blooms and Butterflies

Butterfly Gardens have become quite popular in many regions of the country. It is interesting to note that native azaleas seem to attract butterflies, so they make ideal plants in a butterfly garden. There is an interdependence between the azaleas and butterflies. The azaleas provide nectar for the butterflies and butterflies seem to be the best pollinators for the azaleas. As butterflies feed on the nectar in the floral tubes of azalea blossoms, their flapping wings gather pollen from the stamens which is then transferred to the pistils of the next flowers they visit.

The images on these two pages show some summer blooming plants that are popular with butterflies. This page focuses on the later blooming native azaleas.



R. cumberlandense - D. Hyatt



R. arborescens var. *georgiana* - D. Hyatt



R. prunifolium - C. Segree



Hydrangea & *R. prunifolium* - C. Segree



'Pennsylvania' - C. Segree



Yellow Fringed Orchid - Doug Jolley



Dwarf Joe Pye Weed - Carol Segree



Pentax - D. Hyatt



R. prunifolium - Doug Jolley



Clethra 'Ruby Spire' - Doug Jolley



Turks Cap Lily - D. Hyatt



Zinnia - Doug Jolley



Lily 'Big Splash' - Carol Segree



Butterfly Weed - D. Hyatt



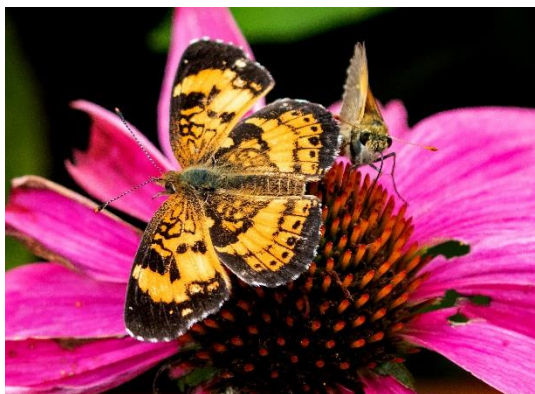
Blue Lobelia - D. Hyatt



Cardinal Flower - D. Hyatt



Rudbeckia - D. Hyatt



Coneflower - Doug Jolley

Cardinal Flower - D. Hyatt

Here are some other flowers that seem to attract butterflies. Special thanks to Doug Jolley, and Carol Segree for providing butterfly and garden images.

Reminder!
Renewal notices for next year will be sent in early September.

Potomac Valley Chapter ARS - Newsletter
Donald W. Hyatt, Editor
donaldhyatt@verizon.net



Potomac Valley Chapter
of the
American Rhododendron Society

The Potomac Valley Chapter ARS is one of three American Rhododendron Society chapters located in District 9 which represents the Middle Atlantic region of the United States. Some of our chapter activities include:

- Regular Meetings with Speakers
- Annual Chapter Banquet
- Garden Tours
- Field Trips to Nurseries or to Wild Stands of Native Azaleas and Rhododendrons
- Local and National Seed Exchanges
- Plants for Members Program
- Flower Show
- Informative Chapter Newsletters
- Annual Photography Contest
- Access to Chapter Library Books

Our regular chapter meetings are usually held four times a year at the Potomac Community Center in Potomac, MD, on Sunday afternoons. However, we do hold occasional meetings at other locations in nearby Maryland, Virginia, or Washington, DC.

We encourage you to check out our chapter website which includes at least 20 years of previous newsletters that contain interesting articles, more color pictures, and examples of past activities:

www.arspvc.org

As a member of our local chapter you will also become a member at the national level of the American Rhododendron Society. This entitles you to a year's subscription of their outstanding quarterly **Journal** filled with information and many color pictures. You will also be invited to attend national conventions or regional conferences.

The cost of ARS membership is \$40 per year and includes membership in a chapter of your choice, such as our Potomac Valley Chapter. If you are already a member of another ARS Chapter, you may join the Potomac Valley Chapter as an Associate Member for only \$10 per year but you will need to identify your home chapter.

For more information about the American Rhododendron Society, check out their website:

www.rhododendron.org

Membership Application
American Rhododendron Society

Name _____

Address _____

City/State _____

Zip/Country _____

Telephone _____

E-mail: _____

Memberships are on a calendar year basis and include the local chapter membership:

Individual/Family.....	\$40.00
Student (proof of age required).....	10.00
Commercial/Corporate.....	90.00
Sustaining	75.00
Sponsoring.....	150.00
Life, single	1,000.00
Life, family.....	1,500.00
Associate Membership*.....	10.00

**Associate Members must identify home chapter*

I would like my "home" chapter to be the
Potomac Valley Chapter

To join our chapter, contact our treasurer:

POTOMAC VALLEY CHAPTER ARS
PVC-ARS Chapter Treasurer
rittwoman@gmail.com

You may also send this form with US Funds payable to the national organization:

AMERICAN RHODODENDRON SOCIETY
P.O. Box 43
Craryville, NY 12521

To pay online by credit card, follow the link to "Membership" on the ARS website:

www.rhododendron.org

More ARS National Contact Points:

Phone (631) 533-0375

Email: member@arsoffice.org